



We are honored to have served our communities since 1946!

# Snohomish County PUD Lake Stevens Integrated Water Systems 2025 Annual Water Quality Report

## Contents

- Where Your Water Comes From . . . . 2
- General Information . . . . . 3
- Definition of Terms . . . . . 4
- Testing Results . . . . . 5-7
- Contact Us . . . . . 8

**SNOHOMISH COUNTY PUD** is pleased to report that your drinking water complies with federal and state drinking water quality standards. This report summarizes the key findings of the PUD’s 2025 water quality testing program. It illustrates the utility’s commitment to delivering the highest quality drinking water.

Each year, the PUD prepares a Water Quality Report for its customers. We want you to know where your water comes from, how it is treated and that it is safe to drink. The purpose of this report is to help people, especially those with special health needs, make informed decisions about their drinking water.

## Special Health Information

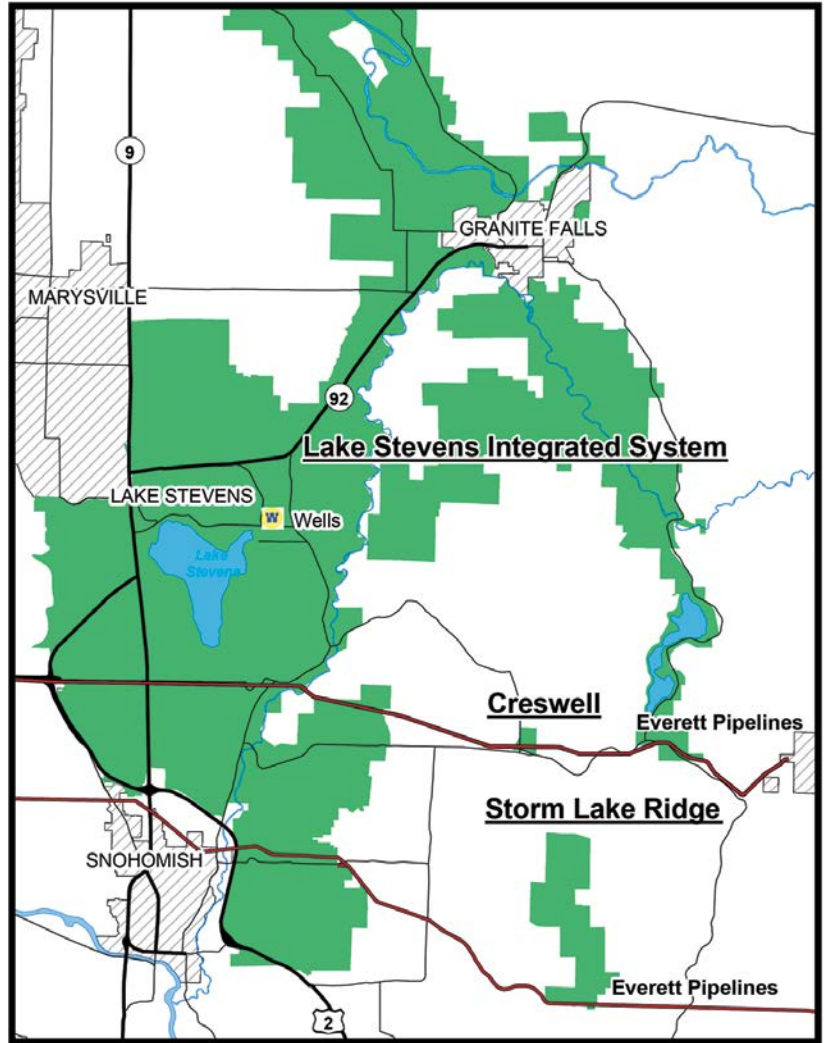
*Some people may be more vulnerable to contaminants in drinking water than the general population. Immuno-compromised persons – such as persons with cancer undergoing chemotherapy, persons who have undergone organ transplants, people with HIV/AIDS or other immune system disorders, some elderly and infants – can be particularly at risk from infections. These people should seek advice about drinking water from their health care providers. EPA/CDC guidelines on appropriate means to lessen the risk of infection by Cryptosporidium and other microbial contaminants are available from the Safe Drinking Water Hotline (1-800-426-4791).*

## Where Your Water Comes From

This report covers three separate PUD water systems: the Lake Stevens Integrated Water System, the Creswell Water System, and the Storm Lake Ridge Water System. All three systems receive treated surface water purchased from the City of Everett. The water comes from Spada Lake Reservoir, which is located at the headwaters of the Sultan River about 30 miles east of Everett.

Water from Everett begins as surface water stored in Spada Lake Reservoir. Before reaching Everett's treatment plant, it passes through the PUD's Jackson Hydroelectric Project, where the water is used to generate hydroelectric power. Everett's treatment plant uses coagulation and advanced filtration techniques to remove suspended particles that may contaminate the water. The pH is adjusted to reduce its corrosiveness, chlorine is added as a disinfectant to help protect against harmful microorganisms, and fluoride is added for dental protection.

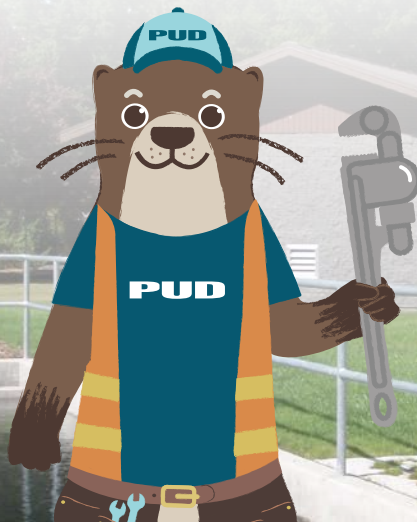
The Lake Stevens Integrated Water System also receives groundwater from two PUD-owned wells at the Lake Stevens treatment facility northeast of downtown Lake Stevens. The water from these wells receives treatment for iron and manganese removal and is chlorinated. Fluoride is added so the well water is consistent with Everett's fluoridated supply before the two sources are blended in the distribution system, helping maintain the dental health benefits of fluoridation.



The Creswell Water System receives water purchased directly from the City of Everett through taps on Everett's No. 2 and No. 3 pipelines. The Storm Lake Ridge Water System also receives water purchased directly from the City of Everett through Everett's No. 5 pipeline.

### Source Water Assessment and Protection Program (SWAP)

The SWAP program is designed to provide the community with information about the sources of their drinking water. An interactive map identifies protection areas and links to water quality sampling information. The Washington State Department of Health SWAP website, including interactive maps, can be found at <https://fortress.wa.gov/doh/swap/>.



# General Information About Drinking Water

## Substances Expected to be in Drinking Water

To ensure that tap water is safe to drink, the Washington State Department of Health (DOH) and the U.S. Environmental Protection Agency (EPA) set regulations limiting the amount of certain contaminants in the water provided by public water systems. The U.S. Food & Drug Administration (FDA) and the Washington State Department of Agriculture regulations establish limits for contaminants in bottled water that must provide the same protection for public health. Drinking water, including bottled water, may reasonably be expected to contain at least small amounts of some contaminants. The presence of contaminants does not necessarily indicate that the water poses a health risk. More information about contaminants and potential health effects can be obtained by calling the EPA's Safe Drinking Water Hotline at 1-800-426-4791.

The sources of drinking water (both tap water and bottled water) include rivers, lakes, streams, ponds, reservoirs, springs and wells. As water travels over the surface of the land or through the ground, it dissolves naturally occurring minerals – in some cases, radioactive material – and substances resulting from the presence of animals or from human activity. The following substances may be present in source water (drinking water quality is determined by testing for these contaminants).

<b>Microbial contaminants</b> such as viruses and bacteria	<i>May come from wildlife, agricultural livestock or septic systems.</i>
<b>Inorganic contaminants</b> such as salts and metals	<i>Can occur naturally or may result from urban stormwater runoff, industrial or domestic wastewater discharges, mining or farming.</i>
<b>Pesticides &amp; herbicides</b>	<i>May come from a variety of sources such as farming, urban stormwater runoff, and homes or businesses.</i>
<b>Organic contaminants</b> Including synthetic & volatile organic chemicals	<i>By-products of industrial processes and petroleum production and may also come from gas stations, urban stormwater runoff and septic systems.</i>
<b>Radioactive contaminants</b>	<i>Can be naturally occurring or may be the result of oil and gas production and mining activities</i>

## Water Use Efficiency and Conservation

Washington State's Water Use Efficiency Rule outlines requirements for planning, leakage control, and water conservation goal setting and reporting. The Snohomish PUD supports these measures and encourages efficient use of water by our residents, business community, and visitors. Efficient water use reduces waste, protects resources, and helps maintain affordable service for customers. Our continued investment in leak detection and system maintenance supports these goals.

## How Goals Were Met

### Demand-side

*Public education, school programs, conservation kits, rebates, online conservation tips, and advanced meter (AMI) tools that help customers better understand their water use*

### Supply-side

*Leak detection and repair, replacing older water mains and meters, improving water-use tracking, and ongoing maintenance of the water system.*

We are presenting results from 2023 to 2025 using a three-year rolling average, which provides a clearer view of long-term leakage trends and how each system compares to the state standard.

## Water Use Efficiency 2023-2025 *Million Gallons (MG)*

<b>Lake Stevens Production</b>	5,776.9 MG
Authorized Consumption	5,432.3 MG
Distribution System Leakage	344.7 MG (6.0%)
<b>Storm Lake Ridge Production</b>	69.6 MG
Authorized Consumption	68.4 MG
Distribution System Leakage	1.1 MG (1.6%)
<b>Creswell Production</b>	11.2 MG
Authorized Consumption	11.3 MG
Distribution System Leakage	0.0 MG (0.0%)

**Authorized Consumption.** Volume of water used for purposes approved by the water utility. It includes water delivered to customers and certain operational uses such as firefighting, hydrant flushing, construction activities, and treatment plant operations.

**Distribution System Leakage.** Water that enters the distribution system but does not reach customers or authorized uses. It includes leaks in pipes, water theft, and meter inaccuracies.

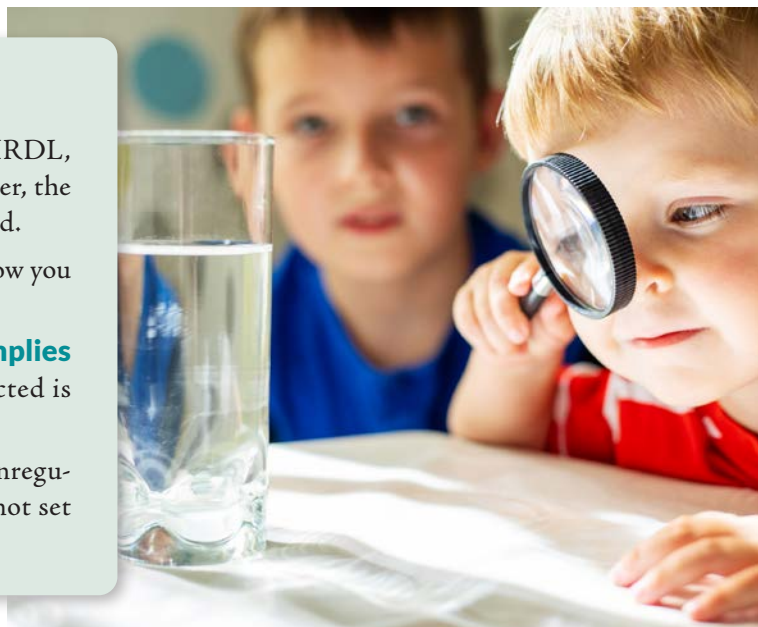
## How Do I Read This Report?

The tables show the **drinking water standard** (MCL, MRDL, or Action Level where applicable), the level found in your water, the sample year, and whether the result met the applicable standard.

The **Minimum/Maximum Range** and **Average Value** show you the contaminant level detected in the water analysis test.

The **last column tells you whether or not the test complies with regulations**. A “YES” indicates that the range detected is within DOH and EPA regulations.

Snohomish County PUD also regularly performs tests for unregulated compounds for which state and federal agencies have not set standards at this time.



## Definition of Terms Used in This Report

**AL (Action Level):** The concentration of a contaminant, which, if exceeded, triggers treatment or other requirements that a water system must follow.

**Contaminant:** Any physical, chemical, biological, or radiological substance or matter in water.

**MCL (Maximum Contaminant Level):** The highest level of a contaminant that is allowed in drinking water. MCLs are set as close to the MCLGs as feasible, using the best available treatment technology.

**MCLG (Maximum Contaminant Level Goal):** The level of a contaminant in drinking water below which there is no known or expected risk to health. MCLGs allow for a margin of safety.

**MRDL (Maximum Residual Disinfectant Level):** The highest level of disinfectant allowed in drinking water. There is convincing evidence that the addition of a disinfectant (e.g., chlorine, chloramines, chlorine dioxide) is necessary for control of microbial contaminants.

**MRDLG (Maximum Residual Disinfectant Level Goal):** The level of a drinking water disinfectant below which there is no known or expected risk to health. MRDLGs do not reflect the benefits of the use of disinfectants to control microbial contaminants.

**N/A:** The EPA has not set MCLGs for these substances.

**ND:** Not detected.

**NTU (Nephelometric Turbidity Units):** Measurement of the clarity, or turbidity, of water.

**ppm (parts per million):** One part per million (equivalent to one dollar in \$1,000,000).

**ppb (parts per billion):** One part per billion (equivalent to one dollar in \$1,000,000,000).

**SMCL (Secondary Maximum Contaminant Level):** These standards are developed to protect the aesthetic qualities of drinking water and are not health-based.

**TT (Treatment Technique):** A required process intended to reduce the level of a contaminant in drinking water.

## Cross Connections

Drinking water is, of course, used for much more than just drinking. Some uses of water – such as for irrigation systems, hydraulic boat lifts, boilers and portable hose connections like fertilizer sprayers – could contaminate the drinking water.

These potential sources of contamination are called cross connections. Pressure changes in the water system could cause these contaminants to be drawn back or to “backflow” into the drinking water.

Fortunately, backflow from a cross connection can be prevented. The PUD’s Cross Connection Control Program protects the water system from contaminants by ensuring that customers have properly installed and maintained backflow prevention devices. Call the Water Utility at 425-397-3000 for more information.

## LAKE STEVENS INTEGRATED WATER SYSTEM PWSID# 809071

The PUD's Integrated System is supplied water from the City of Everett and a PUD-owned well field. The system provides water to approximately 22,500 connections (estimated customer base of approximately 60,000 people) and includes 360 miles of pipe, 14.1 million gallons of storage, 12 pump stations, 9 City of Everett taps, and 25 pressure zones.

### REGULATED AT THE SOURCE

CITY OF EVERETT									
Substance	Unit	MCLG	MCL	Your Water	Range Low	Range High	Sample Date	Complies	Typical Sources
Turbidity	NTU	N/A	TT	0.04	100% of samples met limits		2025	YES	Soil erosion

*Polymer Statement: During water treatment, organic polymer coagulants are added to improve the coagulation and filtration processes that remove particulates from water. The particulates that are removed can include viruses, bacteria and other disease-causing organisms. The USEPA sets limits on the type and amount of polymer that a water system can add to the water. In addition to the EPA limits, the State of Washington requires that all polymers used be certified safe for potable water use by an independent testing organization (NSF International). During treatment, Everett adds only NSF-approved polymers and the levels used are far below the safe limits set by the USEPA.*

LAKE STEVENS TREATMENT PLANT									
Substance	Unit	MCLG	MCL	Your Water	Range Low	Range High	Sample Date	Complies	Typical Sources
Arsenic	ppb	0	10	1.8	1.7	1.8	2025	YES	Erosion of natural deposits

### REGULATED IN THE DISTRIBUTION SYSTEM

LAKE STEVENS INTEGRATED SYSTEM									
Substance	Unit	MCLG	MCL	Your Water	Range Low	Range High	Sample Date	Complies	Typical Sources
Chlorine	ppm	4 (MRDLG)	4 (MRDL)	0.87	0.20	1.28	2025	YES	Measure of disinfectant added to water
Fluoride	ppm	4	4	0.58	0	0.86	2025	YES	Dental health additive
Haloacetic Acids <sup>1</sup>	ppb	N/A	60	39	6	50	2025	YES	By-product of drinking water chlorination
Total Trihalomethanes <sup>1</sup>	ppb	N/A	80	50	13	55	2025	YES	By-product of drinking water chlorination

<sup>1</sup>Haloacetic acids and trihalomethanes form as by-products of the chlorination process used to control microbes. The range shown reflects results from all monitoring locations used for compliance, and the reported value is the highest locational running annual average.

### LEAD & COPPER RULE - REGULATED AT THE CONSUMER TAP

LAKE STEVENS INTEGRATED SYSTEM									
Substance	Unit	MCLG	AL	Your Water (90th%) <sup>2</sup>	# of Samples Above the AL	Sample Date	Complies	Typical Sources	
Lead	ppb	0	15	3	0 of 37	2024	YES	Corrosion of household plumbing systems; Erosion of natural deposits	
Copper	ppm	1.3	1.3	0.4	0 of 37	2024	YES	Corrosion of household plumbing systems; Erosion of natural deposits	

<sup>2</sup>The 90th % Level is the highest result obtained in 90 percent of the samples collected when the results are ranked in order from lowest to highest. This value is used to compare to the AL. The results for water tested before it enters household plumbing were even lower. This indicates that there is virtually no lead or copper in the water you are provided, but your household plumbing may contribute to the presence of lead and copper at your tap.

In Washington State, lead in drinking water comes primarily from materials and components used in household plumbing. The more time water has been sitting in pipes, the more dissolved metals, such as lead, it may contain. Elevated levels of lead can cause serious health problems, especially in pregnant women and young children. To help reduce potential exposure to lead, for any drinking water tap that has not been used for six hours or more, flush water through the tap until the water is noticeably colder before using for drinking or cooking. You can use the flushed water for watering plants, washing dishes, or general cleaning. Only use water from the cold-water tap for drinking, cooking, and especially for making baby formula. Hot water is likely to contain higher levels of lead. If you are concerned about lead in your water, you may wish to have your water tested. Information on lead in drinking water is available from EPA's Safe Drinking Water Hotline at 1-800-426-4791 or online at Basic Information about Lead in Drinking Water | US EPA (<https://www.epa.gov/ground-water-and-drinking-water/basic-information-about-lead-drinking-water>).

### ADDITIONAL WATER QUALITY CHARACTERISTICS

Substance	Unit	Average	Range
Alkalinity	ppm	17	6 - 27
Chloride	ppm	9	7 - 12
Iron	ppm	0.04	ND - 0.13
Manganese	ppm	0.02	ND - 0.03
pH	Standard Unit	7.5	7.1 - 8.3
Sodium	ppm	19	8 - 30
Sulfate	ppm	6	ND - 11
Total Hardness	ppm	108	53 - 118

The information above is voluntary and describes additional characteristics of Lake Stevens System drinking water.

## CRESWELL WATER SYSTEM PWSID# 06325V

The Creswell system supplies water to 37 connections along Dubuque Road and Creswell Road. Water is purchased directly from the City of Everett with taps on Everett's No. 2 and No. 3 pipelines.

### REGULATED AT THE SOURCE

CITY OF EVERETT									
Substance	Unit	MCLG	MCL	Your Water	Range Low	Range High	Sample Date	Complies	Typical Sources
Turbidity	NTU	N/A	TT	0.04	100% of samples met limits		2025	YES	Soil erosion

*Polymer Statement: During water treatment, organic polymer coagulants are added to improve the coagulation and filtration processes that remove particulates from water. The particulates that are removed can include viruses, bacteria and other disease-causing organisms. The USEPA sets limits on the type and amount of polymer that a water system can add to the water. In addition to the EPA limits, the State of Washington requires that all polymers used be certified safe for potable water use by an independent testing organization (NSF International). During treatment, Everett adds only NSF-approved polymers and the levels used are far below the safe limits set by the USEPA.*

### REGULATED IN THE DISTRIBUTION SYSTEM

CRESWELL SYSTEM									
Substance	Unit	MCLG	MCL	Your Water	Range Low	Range High	Sample Date	Complies	Typical Sources
Chlorine	ppm	4(MRDLG)	4(MRDL)	0.67	0.55	0.93	2025	YES	Measure of disinfectant added to water
Fluoride	ppm	4	4	0.45	0	0.86	2025	YES	Dental health additive
Haloacetic Acids <sup>1</sup>	ppb	N/A	60	42	42	42	2025	YES	By-product of drinking water chlorination
Total Trihalomethanes <sup>1</sup>	ppb	N/A	80	46	46	46	2025	YES	By-product of drinking water chlorination

<sup>1</sup>Haloacetic acids and trihalomethanes form as by-products of the chlorination process used to control microbes. The range shown reflects results from all monitoring locations used for compliance, and the reported value is the highest locational running annual average.

### LEAD & COPPER RULE - REGULATED AT THE CONSUMER TAP

CRESWELL SYSTEM									
Substance	Unit	MCLG	AL	Your Water (90th%) <sup>2</sup>	# of Samples Above the AL	Sample Date	Complies	Typical Sources	
Lead	ppb	0	15	ND	0 of 1	2024	YES	Corrosion of household plumbing systems; Erosion of natural deposits	
Copper	ppm	1.3	1.3	ND	0 of 1	2024	YES	Corrosion of household plumbing systems; Erosion of natural deposits	

<sup>2</sup>The 90th % Level is the highest result obtained in 90 percent of the samples collected when the results are ranked in order from lowest to highest. This value is used to compare to the AL. The results for water tested before it enters household plumbing were even lower. This indicates that there is virtually no lead or copper in the water you are provided, but your household plumbing may contribute to the presence of lead and copper at your tap.

US Environmental Protection Agency (USEPA) regulations require monitoring for the presence of lead and copper at household taps in their service area every three years. The data above is from samples collected in August 2024. The next round of required sampling will be conducted in 2027.

In Washington State, lead in drinking water comes primarily from materials and components used in household plumbing. The more time water has been sitting in pipes, the more dissolved metals, such as lead, it may contain. Elevated levels of lead can cause serious health problems, especially in pregnant women and young children. To help reduce potential exposure to lead, for any drinking water tap that has not been used for six hours or more, flush water through the tap until the water is noticeably colder before using for drinking or cooking. You can use the flushed water for watering plants, washing dishes, or general cleaning. Only use water from the cold-water tap for drinking, cooking, and especially for making baby formula. Hot water is likely to contain higher levels of lead. If you are concerned about lead in your water, you may wish to have your water tested. Information on lead in drinking water is available from EPA's Safe Drinking Water Hotline at 1-800-426-4791 or online at Basic Information about Lead in Drinking Water | US EPA (<https://www.epa.gov/ground-water-and-drinking-water/basic-information-about-lead-drinking-water>).

### ADDITIONAL WATER QUALITY CHARACTERISTICS

Substance	Unit	Average	Range
Alkalinity	ppm	7	4 - 12
Chloride	ppm	2	2 - 3
Iron	ppm	ND	ND
Manganese	ppm	ND	ND
pH	Standard Unit	8.6	7.5 - 9.2
Sodium	ppm	6	5 - 7
Sulfate	ppm	3	3 - 4
Total Hardness	ppm	17	15 - 23

The information above is voluntary and describes additional characteristics of Creswell System drinking water.

## STORM LAKE RIDGE WATER SYSTEM PWSID# 444316

The Storm Lake Ridge system supplies water to approximately 291 connections in the Storm Lake Ridge community and surrounding area approximately three miles east of Machias and five miles north of Monroe. Water is purchased directly from the City of Everett’s No. 5 pipeline and pumped to the distribution system and a concrete reservoir.

### REGULATED AT THE SOURCE

CITY OF EVERETT									
Substance	Unit	MCLG	MCL	Your Water	Range Low	Range High	Sample Date	Complies	Typical Sources
Turbidity	NTU	N/A	TT	0.04	100% of samples met limits		2025	YES	Soil erosion

*Polymer Statement: During water treatment, organic polymer coagulants are added to improve the coagulation and filtration processes that remove particulates from water. The particulates that are removed can include viruses, bacteria and other disease-causing organisms. The USEPA sets limits on the type and amount of polymer that a water system can add to the water. In addition to the EPA limits, the State of Washington requires that all polymers used be certified safe for potable water use by an independent testing organization (NSF International). During treatment, Everett adds only NSF-approved polymers and the levels used are far below the safe limits set by the USEPA.*

### REGULATED IN THE DISTRIBUTION SYSTEM

STORM LAKE RIDGE SYSTEM									
Substance	Unit	MCLG	MCL	Your Water	Range Low	Range High	Sample Date	Complies	Typical Sources
Chlorine	ppm	4 (MRDLG)	4 (MRDL)	0.73	0.38	1.09	2025	YES	Measure of disinfectant added to water
Fluoride	ppm	4	4	0.44	0	1.15	2025	YES	Dental health additive
Haloacetic Acids <sup>1</sup>	ppb	N/A	60	57	57	57	2025	YES	By-product of drinking water chlorination
Total Trihalomethanes <sup>1</sup>	ppb	N/A	80	45	45	45	2025	YES	By-product of drinking water chlorination

<sup>1</sup>Haloacetic acids and trihalomethanes form as by-products of the chlorination process used to control microbes. The range shown reflects results from all monitoring locations used for compliance, and the reported value is the highest locational running annual average.

### LEAD & COPPER RULE - REGULATED AT THE CONSUMER TAP

STORM LAKE RIDGE SYSTEM									
Substance	Unit	MCLG	AL	Your Water (90th%) <sup>2</sup>	# of Samples Above the AL	Sample Date	Complies	Typical Sources	
Lead	ppb	0	15	ND	0 of 1	2024	YES	Corrosion of household plumbing systems; Erosion of natural deposits	
Copper	ppm	1.3	1.3	0.3	0 of 1	2024	YES	Corrosion of household plumbing systems; Erosion of natural deposits	

<sup>2</sup>The 90th % Level is the highest result obtained in 90 percent of the samples collected when the results are ranked in order from lowest to highest. This value is used to compare to the AL. The results for water tested before it enters household plumbing were even lower. This indicates that there is virtually no lead or copper in the water you are provided, but your household plumbing may contribute to the presence of lead and copper at your tap.

US Environmental Protection Agency (USEPA) regulations require monitoring for the presence of lead and copper at household taps in their service area every three years. The data above is from samples collected in August 2024. The next round of required sampling will be conducted in 2027.

In Washington State, lead in drinking water comes primarily from materials and components used in household plumbing. The more time water has been sitting in pipes, the more dissolved metals, such as lead, it may contain. Elevated levels of lead can cause serious health problems, especially in pregnant women and young children. To help reduce potential exposure to lead, for any drinking water tap that has not been used for six hours or more, flush water through the tap until the water is noticeably colder before using for drinking or cooking. You can use the flushed water for watering plants, washing dishes, or general cleaning. Only use water from the cold-water tap for drinking, cooking, and especially for making baby formula. Hot water is likely to contain higher levels of lead. If you are concerned about lead in your water, you may wish to have your water tested. Information on lead in drinking water is available from EPA’s Safe Drinking Water Hotline at 1-800-426-4791 or online at Basic Information about Lead in Drinking Water | US EPA (<https://www.epa.gov/ground-water-and-drinking-water/basic-information-about-lead-drinking-water>).

### ADDITIONAL WATER QUALITY CHARACTERISTICS

Substance	Unit	Average	Range
Alkalinity	ppm	7	3 - 9
Chloride	ppm	2	2 - 3
Iron	ppm	ND	ND
Manganese	ppm	ND	ND
pH	Standard Unit	7.8	7.4 - 8.2
Sodium	ppm	6	5 - 7
Sulfate	ppm	3	3 - 4
Total Hardness	ppm	16	10 - 24

The information above is voluntary and describes additional characteristics of Storm Lake Ridge System drinking water.



Water Utility  
PO Box 1107  
Everett, WA 98206-1107

## The PUD Water Utility Has Completed Its Lead Service Line Inventory

The PUD Water Utility recently completed an inventory of more than 23,000 water services (small pipes that deliver water from the water main to a home or building) as required by the Environmental Protection Agency's Lead and Copper Rule Revisions. The purpose of the inventory is to identify any water service lines that contain lead. The inventory showed no evidence of lead service lines in the PUD's community water systems.

You can find additional information on the PUD website at [www.snopud.com/inventory](http://www.snopud.com/inventory)

## Customer Views Welcome

There are several ways you can get involved in water quality issues. You can call us at 425-397-3000 or communicate with elected officials, participate in public hearings and attend Snohomish County PUD Commission meetings. Check the local newspaper for information on public meetings regarding water quality, water policies and other issues.

The Snohomish County PUD Board of Commissioners meets at 9 a.m. the first and third Tuesday of each month at Snohomish County PUD, 2320 California Street in Everett. Board sessions are open to the public. Please call 425-783-8611 in advance to confirm meeting dates and times, or check the meeting agenda at [www.snopud.com/commission](http://www.snopud.com/commission).

You can also find information for water customers at our website: [www.snopud.com/water](http://www.snopud.com/water)

## Este informe contiene información muy importante sobre su agua potable. Tradúzcalo o hable con alguien que lo entienda bien.

El PUD del Condado de Snohomish participa en el servicio de línea de idioma de AT&T. Si necesita ayuda con el idioma inglés o necesita un intérprete, comuníquese con un representante de servicio al cliente de PUD al 425-783-1000 (de lunes a viernes, de 8 a.m. a 5:30 p.m.) y se llamará a un intérprete.

## Safe Drinking Water & Water System Security

The PUD is committed to a strong security program to protect water quality. The PUD's facilities are secured; however, we could use your assistance. If you see suspicious activity in or around PUD pump stations, reservoirs or hydrants, please contact us at 425-397-3000 (after regular working hours, holidays or on weekends, please contact us at 425-783-1000).

## For More Information

- ♦ PUD website: [www.snopud.com/water](http://www.snopud.com/water)
- ♦ Safe Drinking Water Act (SDWA) hotline: 1-800-426-4791
- ♦ E-mail: [safewater@epa.gov](mailto:safewater@epa.gov)
- ♦ Washington State Department of Health Division of Drinking Water: 253-395-6750
- ♦ Website: [www.doh.wa.gov/community-and-environment/drinking-water](http://www.doh.wa.gov/community-and-environment/drinking-water)

## Contact Us

- ♦ Water Utility: 425-397-3000
- ♦ Monday-Friday, 7:30 a.m. to 4 p.m.
- ♦ Toll-free in Western Washington and outside the Everett local calling area at 1-877-783-1000, extension 3000

*We're proud to introduce Splash, the PUD water otter. He loves spreading the word about water conservation!*

Prepared in May 2026 Printed on recycled paper

Great tips to help you save water!



[snopud.com/savewater](http://snopud.com/savewater)

