



Welcome!

With an update to an advanced meter, solar customers have easy access to view how much power their array is sending to the grid as well as how much energy they purchase. Although this information can no longer be viewed by walking out to the meter, it is easily available on MySnoPUD, at almost real-time and in greater detail.

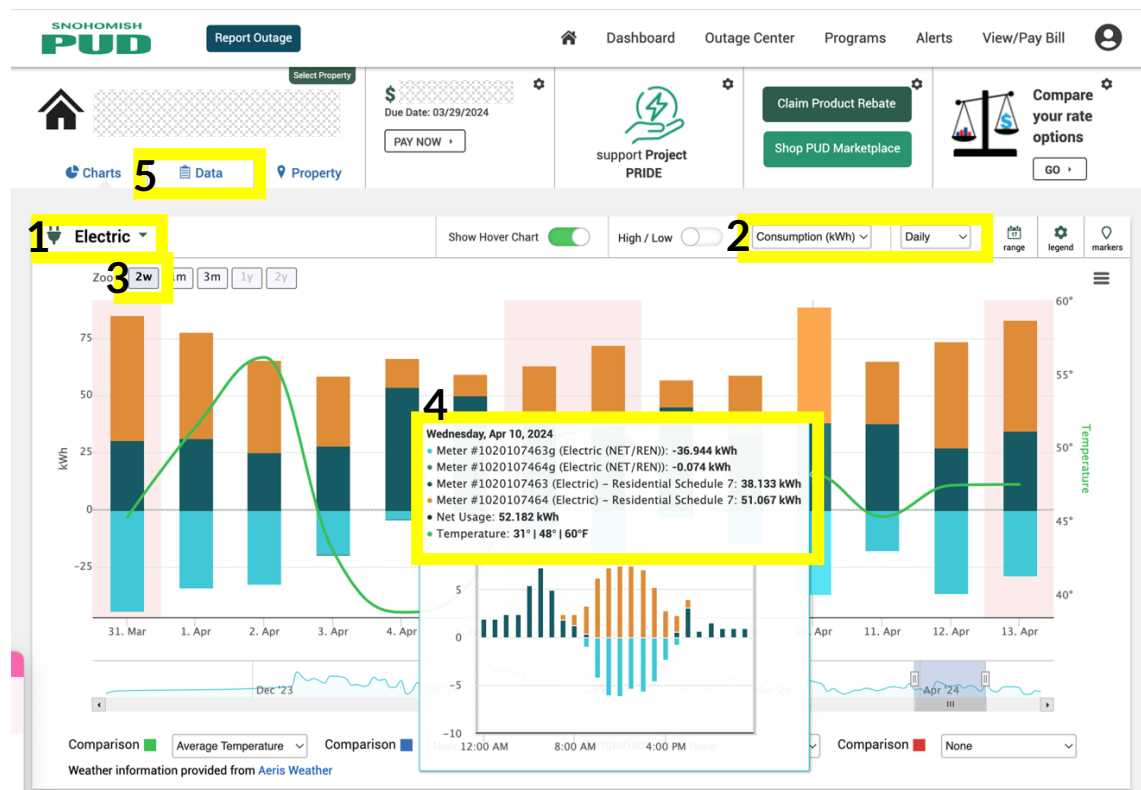
If you do not have a MySnoPUD account, it's simple to create one. For details, please visit snopud.com/mysnopud.com.

Once you have logged in, here are tips to get you started. Please note, after your meter is installed, it can take 8-10 days for all the data to sync up and be viewable.

Getting started:

When you log in you will be on your Dashboard

1. Make sure you are filtered to "Electric" (if "Water" is showing, just use the drop-down)
2. You will also want to be viewing "Consumption (kWh)" and "Daily." If it says "Dollar (\$)" or a different date range, just click the arrows to change the options.
3. In this example we are viewing two weeks of data
4. If we click on one of the dated bar charts, color-coded data will pop up. In this example:
 - **Meter #1020107463g** is the amount of excess solar production that was sent to the grid (KWH NET on your bill).
 - **Meter #1020107464g** is the amount of power your inverter used (KWH NET on your bill). *Note, this is too small to appear on chart, but can be viewed in "Data" screen*
 - **Meter #1020107463** is the amount of power you consumed from the PUD grid (KWH on your bill).
 - **Meter #1020107464** is your total production (KWH REN on the bill).
5. To dig in even more, click on "Data"



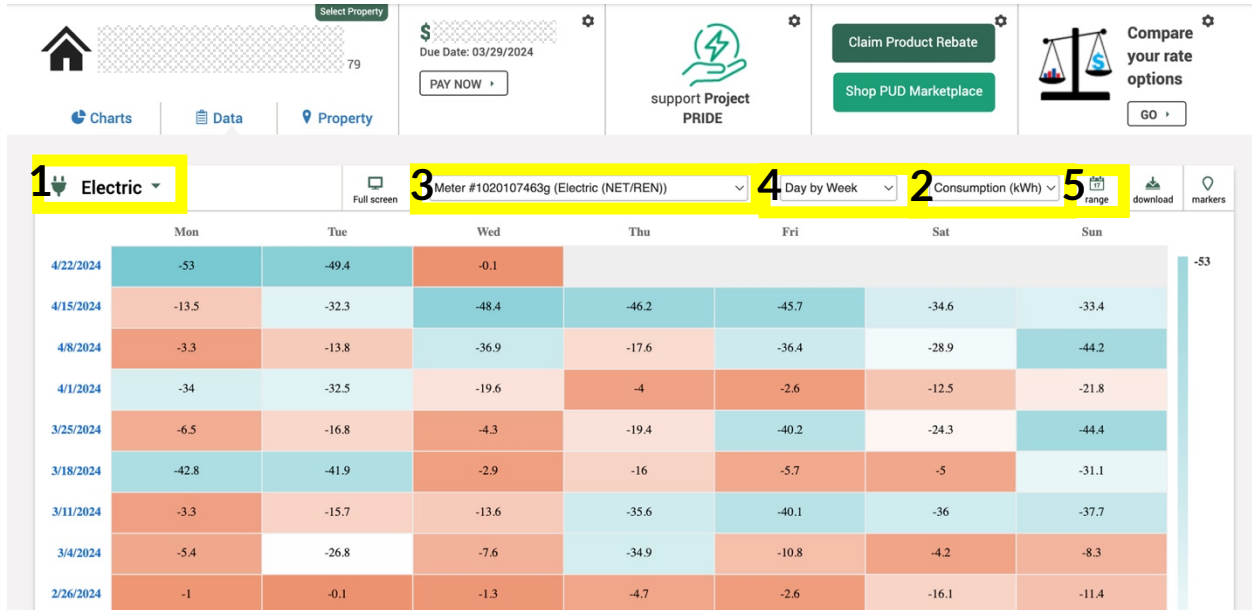
Viewing on "Data" screen (image on next page):

Again, make sure you are:

1. Viewing your "Electric" information.

There are lots of ways to filter data in this area

2. Be sure you are viewing “Consumption (kWh)”
3. If you choose “All Meters” you will see all of the data on separate lines. **If you choose “All Usage” it adds and subtracts all numbers from the bill into one line. This is not helpful to understand your usage, so instead choose “All Meters” or look at them individually.** The screen shot below is filtered to show excess solar production sent to the grid ([meter #1020107463g/KWH NET](#) on this bill)
4. “Day by Week” is also selected. There are many different filters in this drop-down including “Hour by Day” or down to 15-minute increments.
5. You can also choose a “range” of dates to target specific information. Please explore and see what you find most interesting and helpful!



Thank you for supporting solar energy in our communities
snopud.com/solaroptions